

# PALMBROOKE TOWNHOMES

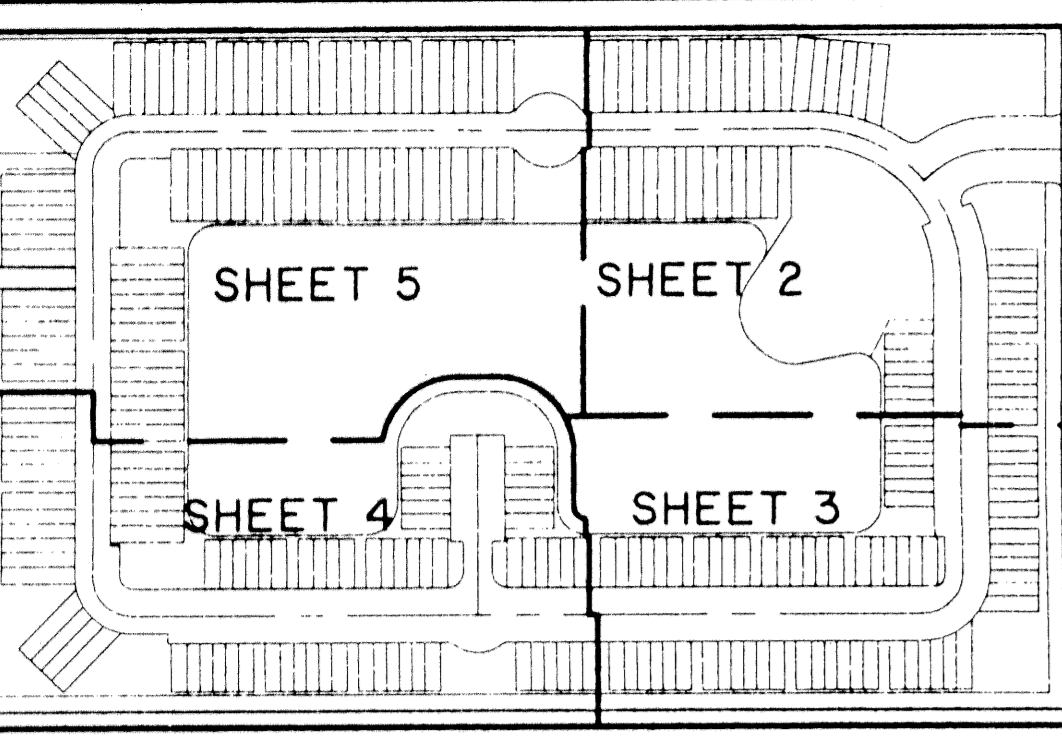
LYING IN SECTION 12, TOWNSHIP 43 SOUTH, RANGE 42 EAST,  
CITY OF WEST PALM BEACH, PALM BEACH COUNTY, FLORIDA.  
SHEET 5 OF 5

# 187

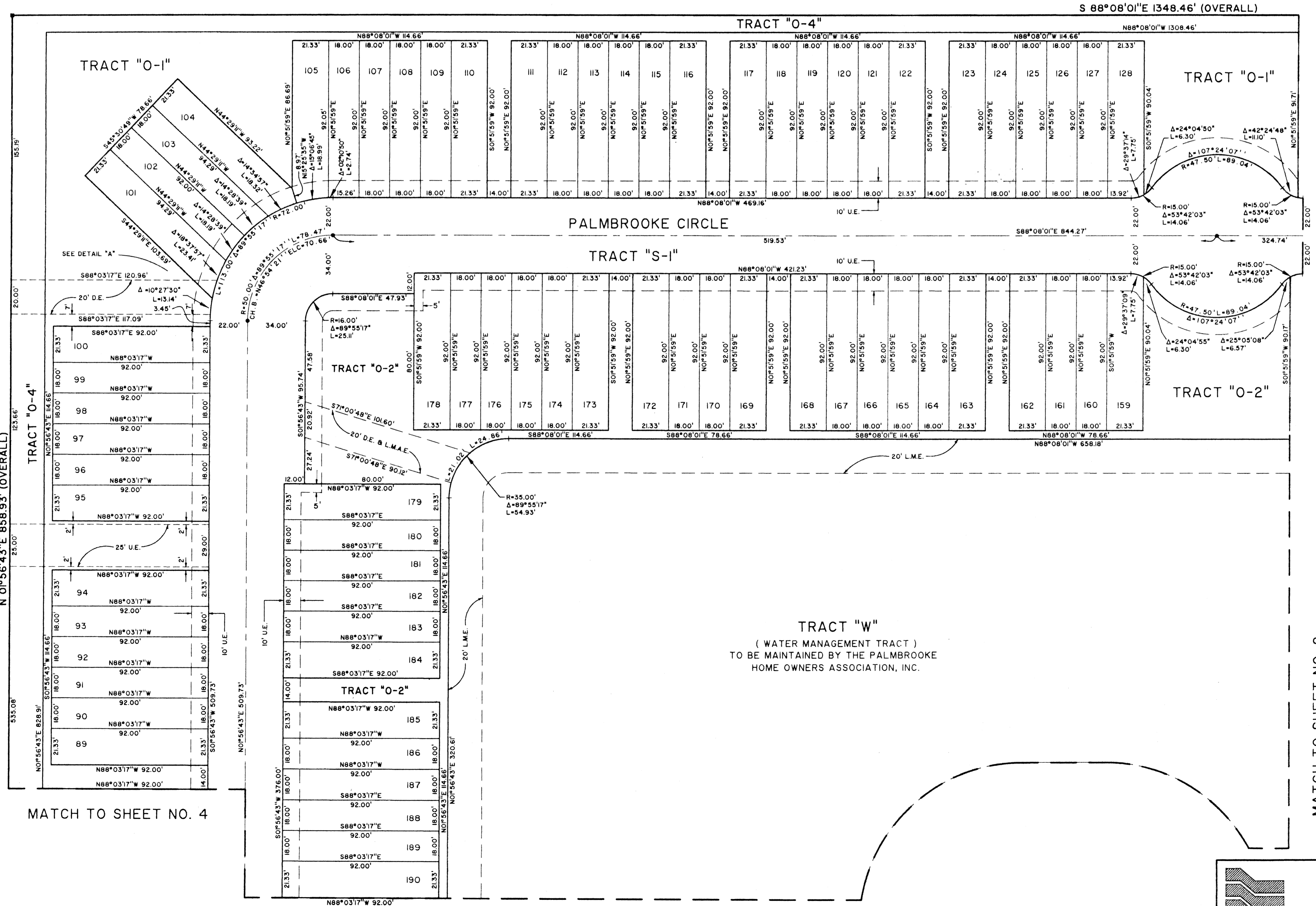
PUBLIC WATER SUPPLY AREA  
WEST PALM BEACH WATER COMPANY  
( PLAT BOOK 23, PAGE 149 )

STATE OF FLORIDA 55  
COUNTY OF PALM BEACH  
THIS PLAT WAS FILED FOR RECORD AT \_\_\_\_\_  
M. THIS \_\_\_\_\_ DAY OF \_\_\_\_\_ 2001  
AND DULY RECORDED IN PLAT BOOK NO. \_\_\_\_\_  
ON PAGE \_\_\_\_\_  
DOROTHY H. WILKEN, CLERK OF THE CIRCUIT COURT  
BY \_\_\_\_\_ D.C.

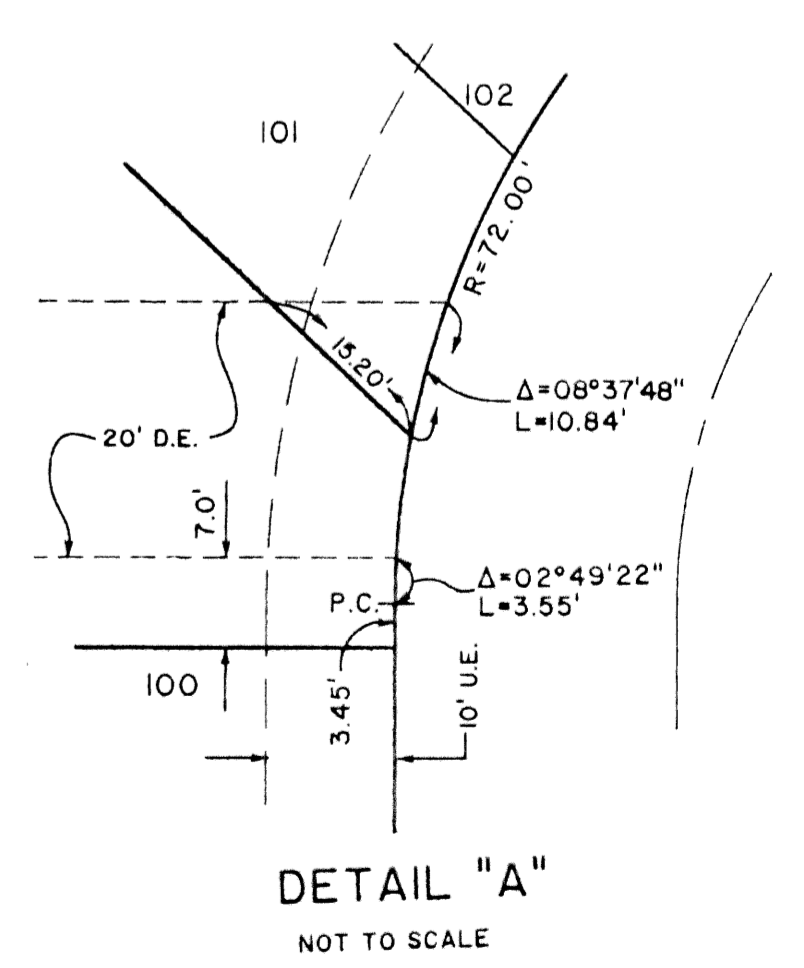
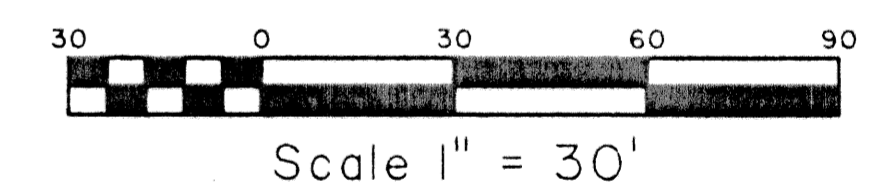
KEY MAP  
NOT TO SCALE



NOT PLATTED



MATCH TO SHEET NO. 2



MATCH TO SHEET NO. 2

TRACT "W"  
( WATER MANAGEMENT TRACT )  
TO BE MAINTAINED BY THE PALMBROOKE  
HOME OWNERS ASSOCIATION, INC.

Landmark Surveying & Mapping Inc.  
1850 Forest Hill Boulevard  
Ph. (561) 433-5405 Suite 100 W.P.B. Florida  
LB # 4396

PALMBROOKE TOWNHOMES

MATCH TO SHEET NO. 4

MATCH TO SHEET NO. 4